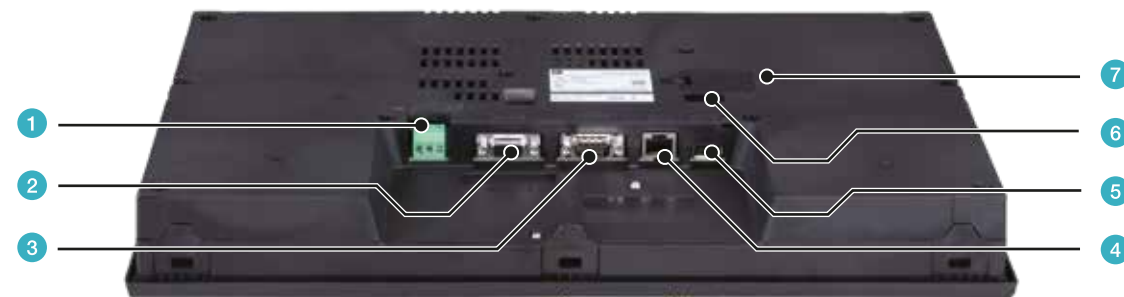


Programmable Operator Interface General Catalog

MONITOUCH

Interface



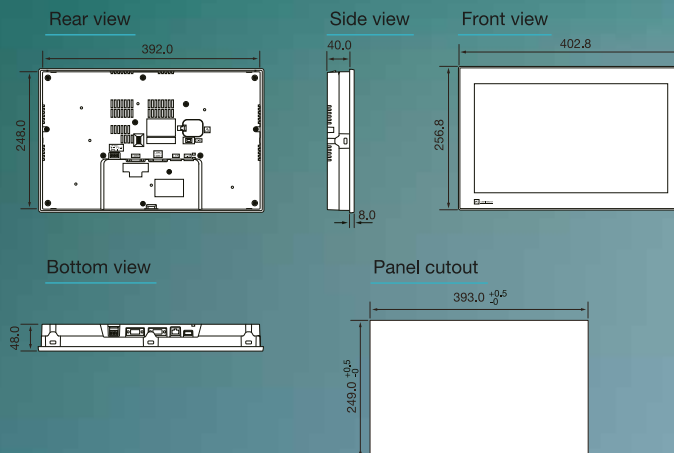
*1 COM2(RS-232C) and COM3(RS-485) can be used simultaneously.

- | | | |
|---------------------------------------|---|--|
| 1 Power supply terminal block | 2 RS-422/RS-485 communication connector female (COM1) | 3 RS-232C/RS-485 communication connector male (COM2/COM3) *1 |
| 4 100BASE-TX/10BASE-T connector (LAN) | 5 USB-A(U-A) | 6 USB miniB(U-B) |
| | | 7 Battery holder (TS-BT) |

Dimensions

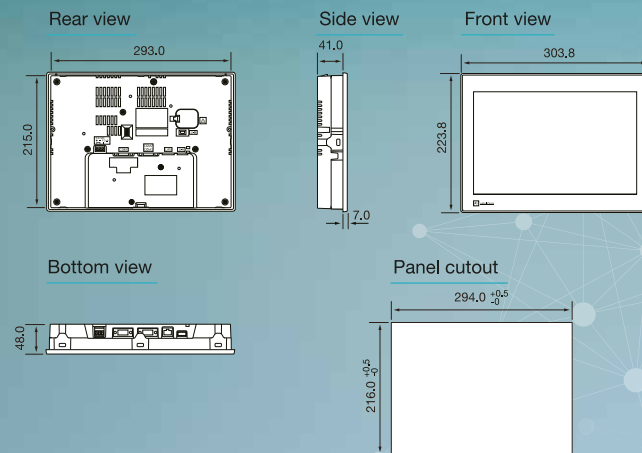
TS4150i

(Unit: mm)



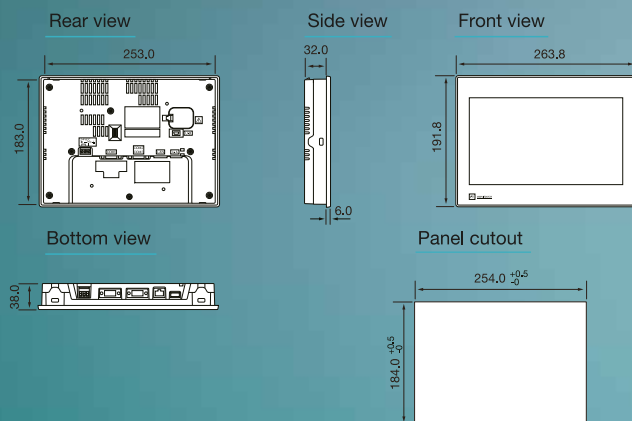
TS4120i

(Unit: mm)



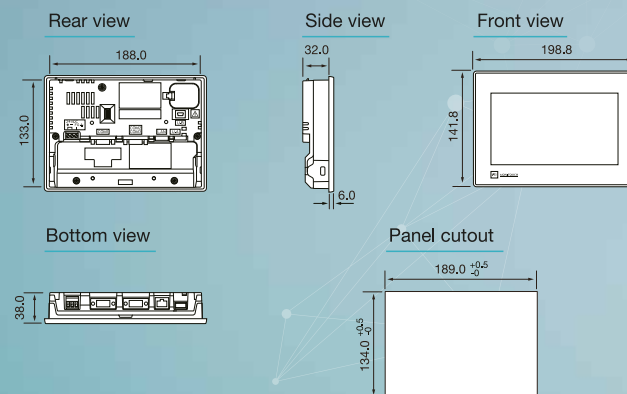
TS4100i

(Unit: mm)



TS4070i

(Unit: mm)



TS4000 BASIC MODEL Series



Product Lineup



TS4150i



TS4120i



TS4100i



TS4070i

Wide Display

Analog resistance film

16.7M Colors

Serial 2ch *1

Ethernet 1ch

USB A/mini B

*1 Available as 3ch by using COM2/COM3 simultaneously.

Model

TS4□□0i

Screen size

15: 15.6" wide 12: 12.1" wide 10: 10.1" wide 07: 7.0" wide

New basic model with a vivid, high-precision widescreen LCD



Wide Display
TS4000 BASIC MODEL
Series

01 Large Widescreen LCD

High-resolution widescreen LCD allows precise rendering of both text and parts. Great volume of information can be displayed together on 1 screen at site.



(Example) Resolution
640 x 480 (V9 Lite 10 inch)

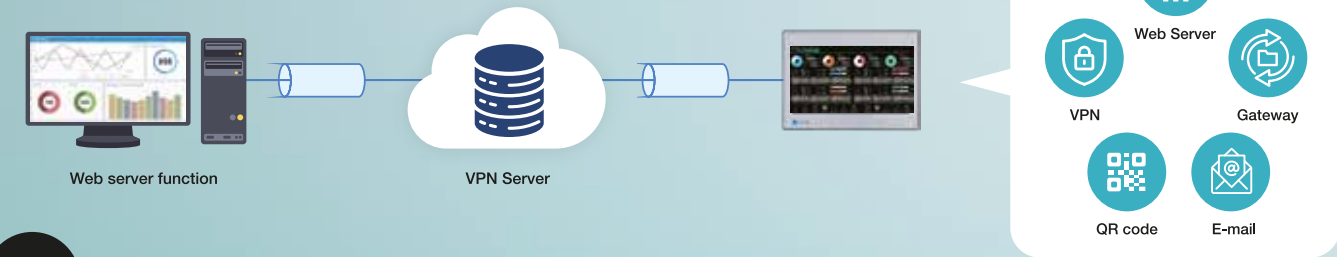


1024 x 600 (TS4000 series 10 inch wide)

02 Networking Functions

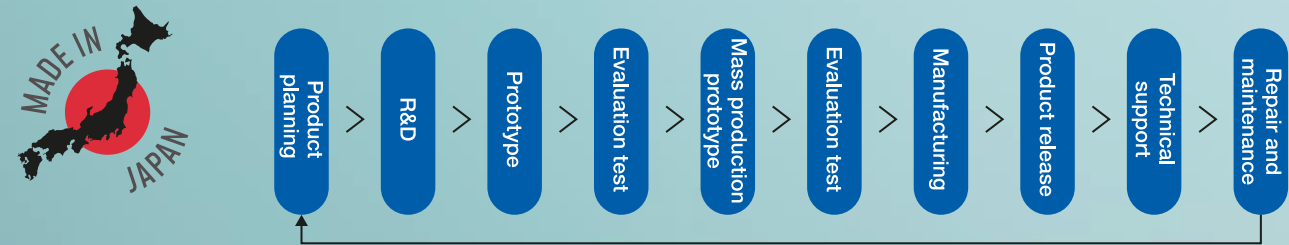
It comes equipped with full networking functions. For example, when using the web server function, the same data as at the site can be easily checked in Google Chrome (web browser) and the information collected by TS4000 helps to visualize the site.

Combination image of VPN connection and Web server function



03 Made in Japan for Quality

We have achieved high quality and cost reduction through efficiency improvements by carrying out all activities from R&D to manufacturing at a single base in Japan.



Item		TS4150i	TS4120i	TS4100i	TS4070i
Power Supply	Rated Voltage	24VDC			
	Permissible Range of Voltage	±10%			
	Permissible Momentary Power Failure	Within 1ms			
	Power Consumption (Max. Rating)	12W or less	11W or less	10W or less	8W or less
	Rush Current	20A or less, 4.0ms (Ambient temperature 25°C)			
Insulation Resistance		Between DC external terminal and FG: 500VDC, 10MΩ or more			
Physical Environment	Operating Ambient Temperature	0~50°C *1			
	Operating Ambient Humidity	85%RH or less (without dew condensation, max. wet-bulb temperature 39°C or lower)*1			
	Operating Altitude	2,000m or less			
	Operating Atmosphere	No exposure to corrosive gas or conductive dust			
	Storage Ambient Temperature	-10~60°C *1			
	Storage Ambient Humidity	85%RH or less (without dew condensation, max. wet-bulb temperature 39°C or lower) *1			
Pollution Degree		2			
Mechanical Operating Conditions	Resistance to Oscillation	JIS B 3502 (IEC61131-2) compliant Vibration frequency: 5 to 9Hz, Half amplitude: 3.5mm, Vibration frequency: 9 to 150Hz, Constant acceleration: 9.8m/s ² (1G) X, Y, Z: 3 directions 10 times each			
	Resistance to Shock	JIS B 3502 (IEC61131-2) compliant Peak acceleration: 147m/s ² (15G), X,Y,Z: 3 directions, 3 times each (18 times in total)			
Electric Operating Conditions	Resistance to Noise	Noise voltage:1,000Vp-p, pulse width:1μs, pulse rise time : 1ns (by noise simulator)			
	Resistance to Static Discharge	IEC61000-4-2 compliant, Contact: 6kV, air: 8kV			
Installation Conditions	Grounding	Grounding resistance: Less than 100Ω, FG/SG separation			
	Structure	Protection structure: Front case: IP65 (when water-proof gasket is used)*2, Rear case: IP20 Installation method: panel mounting			
	Cooling System	Natural air cooling			
	Dimensions W*H*D (mm)	402.8×256.8×48.0	303.8×223.8×48.0	263.8×191.8×38.0	198.8×141.8×38.0
	Panel Cutout W*H (mm)	393 (+0.5/-0) ×249 (+0.5/-0)	294 (+0.5/-0) ×216 (+0.5/-0)	254 (+0.5/-0) ×184 (+0.5/-0)	189 (+0.5/-0) ×134 (+0.5/-0)
	Weight (display only)	Approx. 2.3kg	Approx. 1.5kg	Approx. 1.1kg	Approx. 0.6kg
Case	Color	Black (Surface sheet: Silver)			
	Material	PBT+GF30 resin			

*1 Use at a wet-bulb temperature of 39°C or less because higher temperatures may cause failure. *2 Waterproof gasket is available as an option. When waterproof gasket is not used, it is equivalent to IP40.

Item		TS4150i	TS4120i	TS4100i	TS4070i
Screen Memory (FROM)		128MB			
Backup Memory (SRAM)		230KB			
Display	Display Device	TFT color			
	Resolution	FWXGA: 1366×768	WXGA: 1280×800	WSVGA: 1024×600	WVGA: 800×480
	Screen Size	15.6" wide	12.1" wide	10.1" wide	7.0" wide
	Display Colors	16.77 million colors *3	16.20 million colors *3	16.77 million colors *3	
	Backlight	LED			
	Backlight Life	Approx. 50,000 hours		Approx. 30,000 hours	Approx. 45,000 hours
Touch Switch	Type	Analog resistance film			
Function Switch	Quantity	-			
External Interface	D-Sub 9-pin (female) × 1 (COM1)	RS-422/RS-485 (4-wire or 2-wire type is switched by DIP switches) Asynchronous Data length: 7, 8 bits Parity: Even, odd, none Stop bit: 1, 2 bits Baud rate: 4800, 9600, 19200, 38400, 57600, 76800, 115200, 187500 *4 bps			
	D-Sub 9-pin (male) × 1 *5 (COM2/COM3)	COM2:RS-232C COM3:RS-485 (2-wire type) Asynchronous Data length: 7, 8 bits Parity: Even, odd, none Stop bit: 1, 2 bits Baud rate: 4800, 9600, 19200, 38400, 57600, 76800, 115200 bps			
	Ethernet(RJ-45) × 1	IEEE802.3(10BASE-T)/IEEE802.3u(100BASE-TX) compliant, Compatible with Auto-MDIX			
	Wireless LAN	-			
	SD Card	-			
	USB × 2	Type-A(Ver. 2.0), Type mini-B(Ver. 2.0)			
	AUDIO Output	-			
Clock	Backup Period	5 years (Ambient temperature 25°C)			
	Calendar Accuracy	Gap ±80 sec. per month (Ambient temperature 25°C, When the battery is backed up)			
Standard	CE UKCA	EMC direction: EN61000-6-2, 6-4 RoHS direction: EN IEC63000 Battery regulation: Compatible			
	UL cUL	UL61010-1/UL61010-2-201(E313548)			
	KC	Compatible			
	Radio Act	-			
	Classification Standard	-			

*3 For displaying pictures and 3D parts only. Other parts are displayed in 65,536 colors.

*4 Only for Siemens MPI/PP. *5 COM2/COM3 can be used simultaneously.