

Application story, X-gateway

Web-based visualisation for energy distribution – The Moeller Group

The Moeller Group, which is based in Bonn, Germany, is one of the leading, globally active suppliers of systems and components concerned with power distribution and automation in industrial applications.

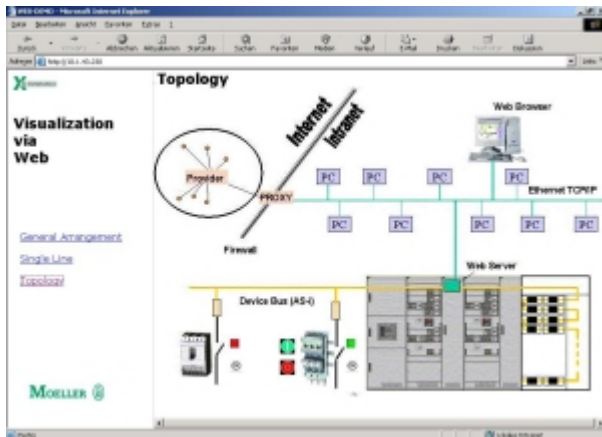


Modern web techniques opens up the possibility to visualize important information from the power distribution. Together with HMS, Moeller has developed the “WebVisu.Energy” concept based on the Anybus X-gateway.

An industrial web server is installed inside the power distribution panel and the device status can be monitored with a PC using Internet Explorer.

Rainer Menden who is an application engineer at Moeller in Bonn, Germany says “Looking at the entire market of switchgears only 30% are equipped with a field bus interface. Wherever conventional control systems are too expensive and operation and Visualisation functions are required, Web-based Visualisation of Energy, or WebVisu.Energy for short, shows its strengths”

The WebVisu.Energy uses conventional switchgear without their own fieldbus interfaces. The auxiliary contacts of the switchgear are connected to a control panel internal bus (AS-i). The data is collected in a web server and transmitted to every location in the company via the Intranet using specially designed web pages. The networked power distribution panels are provided with their own homepage in this way.



The web server of the Anybus X-gateway is the principal item in the WebVisu.Energy system. It has made it possible for maintenance and service specialists to get quick access to the current device status